



Research Article

An Econometric Analysis of Romania's Agricultural Foreign Trade with Developing Countries

Calcedonia Enache

The Academy of Economic Studies, Bucharest, Romania

Correspondence should be addressed to: Calcedonia Enache; calcedoniaenache@yahoo.com

Received date: 8 September 2014; Accepted date: 10 December 2014; Published date: 18 September 2015

Copyright © 2015. Calcedonia Enache. Distributed under Creative Commons CC-BY 4.0

Abstract

Romania, as an EU member state, supports developing countries to integrate trade into their national development policies, in programs and strategies to reduce poverty by regulations related to technical assistance for the participation of these countries in the negotiation and implementation of the Doha Development Agenda agreements. However, in the period 2007-2013, on average, only 3.67 percent of the total imports of agricultural products from developing countries came from countries of Africa, the Caribbean and the Pacific. In this context, the present paper intends to investigate the effects exercised by the domestic demand and the RON/EUR exchange rate on the Romania's agricultural foreign trade with developing countries on the basis of the Vector Autoregressive Model.

Keywords: imports, developing countries, agricultural products, Granger causality.

Introduction

In 2013, the share of agricultural products trade balance deficit stood at 0.32 percent of the GDP, down 0.45 percent points compared to 2007. The coverage of imports by exports was 80.09 percent, 48.08 percentage points more than in 2007. The positive dynamics of net exports with developing countries since 2008 contributed to this evolution. In this context, this paper aims to assess the impact of determinants on the imports of agriculture products from the developing countries by using the Vector Autoregressive Model.

The use of VAR models appeared with works of Sims (1980). He considers that all the variables must be treated as

endogenous variables, thus avoiding the corruption of model with identification restrictions that were arbitrarily established (Pauna, 2007). Later on Lutkepohl (1991), Watson, Hamilton (1994), Enders (1995) and Waggoner and Zha (1999) gave updated surveys of VAR techniques. The use of cointegration theory based approaches in the field of modelling ensures (Granger-1986, Engle-Granger-1987, Johansen - 1988, Phillips Perron-1988, Johansen și Juselius-1990, Dickey Fuller-1981) ensures overcoming the problems related to the non-stationary nature of the time series used.

Albu et al (2003) mentioned that applying the cointegration technique allowed the deduction of the long-term equilibrium relationship, also offering a solid basis for investigating the short-term dynamics. In the

last decade the use of this model has become an empirical approach that makes sense only if the series included have a long-term relationship, so they are co-integrated. This means not only that all series are to be integrated by order one and that the residuals to belong to a stationary series, but it also imposes the condition that there should be at least one linear combination of basic series that is stationary.

One of the VAR model characteristics is the fact that it captures the dynamics of several variables simultaneously, and the impulse response functions capture the propagation of the shock of a dependent variable upon the system. Thus, it may answer to very important questions in terms of the economic policy authorities, such as the following one: How do imports of agricultural products react to an innovation in domestic demand?

The study is structured as follows: Section 2 is dedicated to grasping the Romania's external trade dynamics of agricultural products with developing countries. Section 3 presents the model used. The analysis is based on Vector Autoregressive Model. The data used, the identification method adopted and the actual modelling are described in Section 4. Assessments of the results provided by the econometric model are presented in section 5. The final conclusions are summarized in section 6.

Overall Picture of the Romania's External Trade of Agricultural Products with Developing Countries

The trade balance of Romanian agricultural products with developing countries has contributed positively to the GDP dynamics since 2008, in terms of a faster pace of export growth compared to imports (Figure 1).

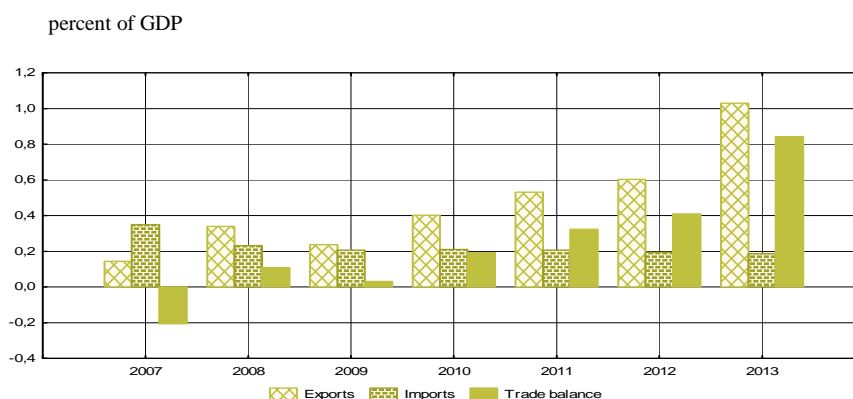


Fig 1: Romania's Agricultural Products Trade Balance with Developing Countries

Source: Own calculations based on data released by EUROSTAT

In 2013, the penetration rate of agricultural products imports from developing countries stood at 1.722 percent, substantially lower than the level recorded in other EU countries in the region (Table 1). The foreign trade with developing countries has been characterized by a high degree of concentration, the annual variation in the physical volume for both the exports and imports of agricultural products since 2008 is sustained for more than 62

percent by two and respectively four commodity groups (for exports - cereals and live animals, and for imports - edible fruit nuts, peel of citrus fruits or melons; coffee, tea, mate and spices; edible vegetables, roots and tubers; oil seeds and oleaginous fruits, miscellaneous grains, seeds and fruit, industrial or medicinal plants, straw and fodder (Figure 2).

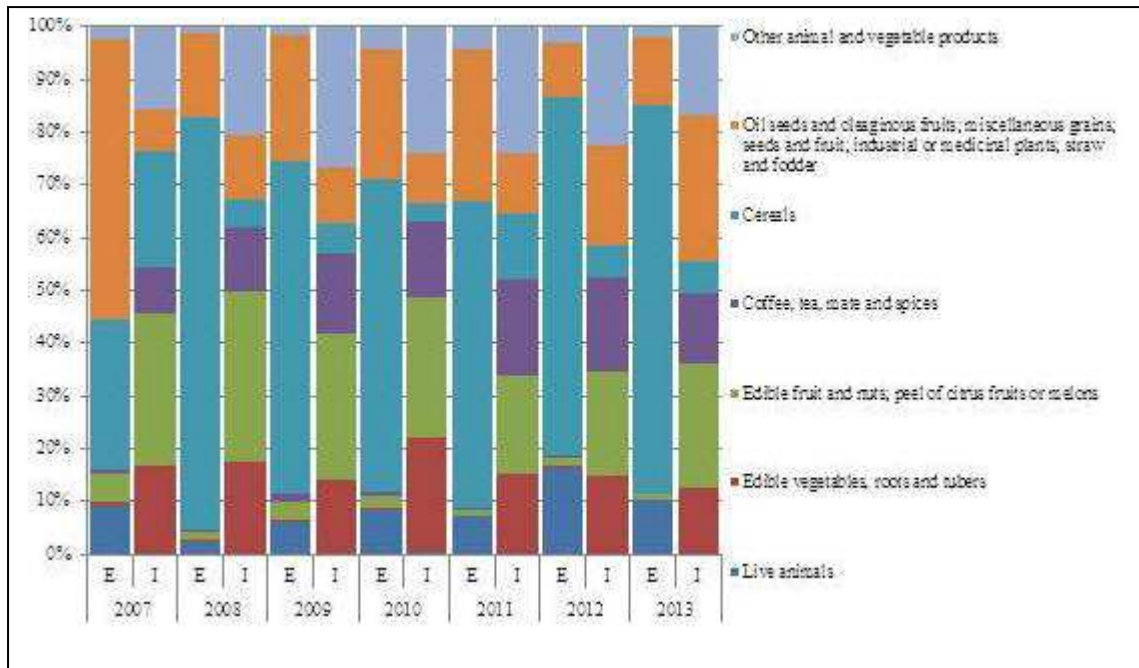


Fig 2: The Structure of the International Trade of Agricultural Products with Developing Countries

Source: Own calculations based on data released by EUROSTAT

Table 1: International Trade of Agricultural Products with Developing Countries - Competitiveness Indicators

		Bulgaria	Slovakia	Czech Republic	Hungary	Romania
Share of exports in GDP (%)	2010	0.699	0.033	0.070	0.393	0.403
	2011	0.888	0.041	0.091	0.507	0.532
	2012	0.749	0.075	0.116	0.559	0.604
	2013	1.497	0.056	0.117	0.527	1.030
Share of imports in GDP (%)	2010	0.434	0.051	0.099	0.111	0.211
	2011	0.374	0.059	0.112	0.113	0.207
	2012	0.351	0.057	0.112	0.124	0.194
	2013	0.403	0.065	0.115	0.149	0.187
Share of trade balance in GDP(%)	2010	0.265	-0.018	-0.029	0.282	0.192
	2011	0.514	-0.018	-0.021	0.394	0.325
	2012	0.398	0.018	0.003	0.435	0.410
	2013	1.094	-0.009	0.002	0.378	0.843
Export effort (%)	2010	7.228	1.226	2.646	6.306	3.581
	2011	8.464	1.301	2.986	6.619	4.160
	2012	7.187	2.362	3.710	7.404	6.059
	2013	16.367	1.912	3.644	6.934	8.788
Import penetration rate (%)	2010	4.617	1.909	3.687	1.860	1.906
	2011	3.754	1.874	3.653	1.553	1.664
	2012	3.499	1.787	3.608	1.735	2.029
	2013	5.009	2.204	3.583	2.056	1.722

Difference between export effort and import penetration rate (p.p)	2010	2.611	-0.683	-1.041	4.446	1.675
	2011	4.710	-0.573	-0.667	5.066	2.496
	2012	3.688	0.575	0.102	5.669	4.030
	2013	11.358	-0.292	0.061	4.878	7.066

Source: Own calculations based on data released by EUROSTAT

In 2013, 25.63 percent of agricultural products imports from developing countries came from Asian countries, 22.36 percent from Central and South America and 6.51 percent from Africa. The remainder came from Oceania and European developing

countries (Figure 4). In terms of exports, the situation is different, the developing states in Africa holding 48.38 percent of the total output in this category of products (Figure 3).

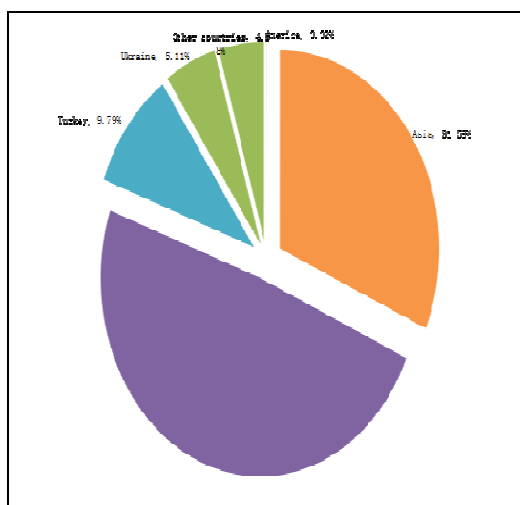


Fig 3: The Geographical Distribution of Agricultural Products Exports to Developing Countries

Romania, as an EU member state, supports developing countries to integrate trade into their national development policies, in programs and strategies to reduce poverty by regulations related to technical assistance for the participation of these countries in the negotiation and implementation of DDA results. In a research study by Zai P.V. (2015) it is mentioned that at the end of 2012, the absorption rate for structural funds in Romania was of less than 6 times higher than in 2009 (11.47 percent), while Lithuania and Estonia were the Central and Eastern European EU Member States with the highest absorption rates – 59 percent, succeeding to attract 4 billion Euros (out of 6.8 billion) – Lithuania and 2 billion (out of 3.4 billion) – Estonia. However, in the period 2007-2013, on average, only 3.67 percent of the total imports of agricultural products from

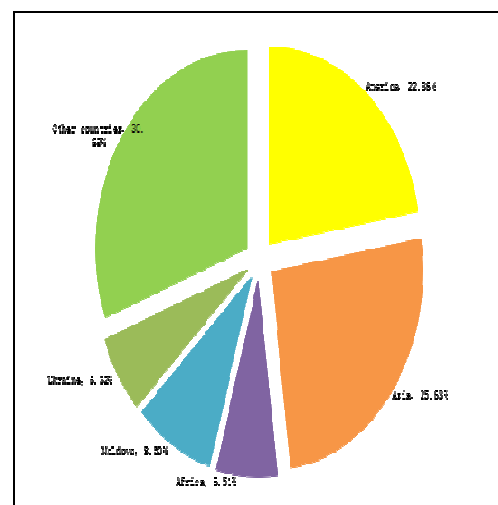


Fig 4: The Geographical Distribution of Agricultural Products Imports from Developing Countries

developing countries came from countries of Africa, the Caribbean and the Pacific.

The Econometric Model

In order to highlight the way imports of agricultural products react to various shocks in the economy, we will use a Vector Autoregressive Model, useful in analysing economic policies.

In a research by Pauna (2007) it is considered that the process that generated the time series $Y_t = (y_{1t}, y_{2t}, \dots, y_{nt})'$ is the sum between a deterministic trend and a purely stochastic part:

$$Y_t = \varphi_t + x_t,$$

where φ_t is the deterministic part and x_t is a zero mean stochastic process. The

deterministic component may be zero ($\varphi_t = 0$), may be a constant ($\varphi_t = \varphi_0$) or may have a linear trend ($\varphi_t = \varphi_0 + \varphi_1 \odot t$). The purely stochastic component of process x_t includes the stochastic/co-integration relations trends. It is presumed that it has zero mean and VAR representation. The noticeable process y_t takes over the deterministic and stochastic

properties from φ_t and x_t . The integration and cointegration order is given by x_t .

It is presupposed that the stochastic part is generated by a VAR process of p order (VAR(p)):

$$Y_t = A_0 + A_1 Y_{t-1} + A_2 Y_{t-2} + \dots + A_p Y_{t-p} + u_t,$$

where:

$$Y_t = \begin{bmatrix} y_{1,t} \\ y_{2,t} \\ \vdots \\ y_{k,t} \end{bmatrix}, \quad A_p = \begin{bmatrix} a_{1p}^1 & a_{1p}^2 & \dots & a_{1p}^k \\ a_{2p}^1 & a_{2p}^2 & \dots & a_{2p}^k \\ \vdots & \vdots & \ddots & \vdots \\ a_{kp}^1 & a_{kp}^2 & \dots & a_{kp}^k \end{bmatrix};$$

$$A_0 = \begin{bmatrix} 0 \\ a_1^0 \\ a_2^0 \\ \vdots \\ a_k^0 \end{bmatrix}; \quad u_t = \begin{bmatrix} u_{1,t} \\ u_{2,t} \\ \vdots \\ u_{k,t} \end{bmatrix}$$

The theory shows that the VAR(p) is stationary if the polynomial defined from determinant $\det(I_n - A_1 Z - \dots - A_p Z^p) = 0$ has the roots outside the unit circle in the complex plane (Hamilton, 1994). If the polynomial determinant has a root unit $z=1$ and all the other roots outside the circle unit, then part of the variables are integrated and there may also be co-integrated variables.

The model can be written in reduced form, in a polynomial way with lag:

$$A(L) = (I_n - A_1 L - A_2 L^2 - \dots - A_p L^p) Y_t = A_0 + u_t$$

or:

$$A(L) Y_t = A_0 + u_t.$$

In the case of a VAR process, each series can be estimated by the least square method or by another method (e.g. the maximum verosimilarity method). The estimated model is written:

$$Y_t = \hat{A}_0 + \hat{A}_1 Y_{t-1} + \hat{A}_2 Y_{t-2} + \dots + \hat{A}_p Y_{t-p} + v_t$$

where v_t is the dimensional vector ($k, 1$) of residues.

It is noted with Σ_v the variance-covariance matrix of residues. The VAR process

parameters can be estimated only by starting from stationary time series. Thus, after the study of series characteristics, these are either stationarized by differentiation, before estimating the parameters, in the case of DS series (with random tendency), or a component of trend type is added in VAR specification, in the case of a deterministic trend.

VAR analysis is finalized into three types of results: impulse response function, forecast error variance decomposition and Granger causality.

- The impulse response function (IRF) traces the effect of a shock of a standard deviation of the residuals of a variable on the current values and on the future evolution of all other variables in the model.
- The variance decomposition (VD) provides information on the relative importance of each shock in the hierarchy of the effects on the variables in the system. As the innovations cannot be anticipated, forecast errors are induced in the variables of interest. VD represents a calculation of the share in the total of these variations that is due to shocks coming from each variable.
- The Granger causality (GC) tests reveal what variables are useful for the forecast of

other variables. We can state that X causes Granger on Y if a Y forecast made on the basis of a set of information that includes the history of X is better than a forecast that ignores the history of X.

i. In order to test whether X is a cause for Y in Granger sense, the regression equation is estimated:

$$Y_t = \mu + \sum_{i=1}^k \beta_i Y_{t-i} + \sum_{j=0}^k \alpha_j X_{t-j} + \varepsilon_t$$

Where k is fixed so that errors are white noise.

The tested hypotheses are the following:

$$H_0 : \alpha_1 = \alpha_2 = \dots \alpha_l = 0,$$

X is not the cause for Y ,

$$H_1 : \exists \alpha_i \neq 0.$$

The testing of null hypothesis is based on the Fisher-Snedecor test. The null hypothesis is rejected if the value calculated for F statistics is higher than the critical value.

ii. In order to test whether Y is a cause for X in Granger sense, the regression equation is estimated:

$$Y_t = \mu + \sum_{i=1}^k \Phi_i X_{t-i} + \sum_{j=0}^k \delta_j Y_{t-j} + \varepsilon_t$$

The tested hypotheses are the following:

$$H_0 : \delta_1 = \delta_2 = \dots \delta_l = 0,$$

Y is not cause for X ,

$$H_1 : \exists \delta_i \neq 0.$$

The testing of null hypothesis is based on the Fisher-Snedecor test. The null hypothesis is rejected if the value calculated for F statistics is higher than the critical value.

Following the application of the two tests, the following conclusions are possible:

a. Unidirectional causality: X is cause for Y ($X \rightarrow Y$), if the null hypothesis is rejected at i and is accepted at ii ;

b. Unidirectional causality: Y is cause for X ($Y \rightarrow X$), if the null hypothesis is rejected at ii and is accepted at i ;

c. Bidirectional causality: $X \leftrightarrow Y$, if the null hypothesis is rejected both at i and at ii ;

d. The two variables are independent if the null hypothesis is accepted at i and ii .

Data Description, Innovation Orthogonalization by the Method Sims Bernanke and the Results of the Diagnosis Analyses for Testing the Statistical Properties

In the present study, I used the VAR technique to assess the factors influencing Romania's imports of agricultural products from developing countries, using the quarterly data from the period 2007-2013.

The variables, data sources and descriptions used in the econometric estimates are presented below:

- Imports of agricultural products from developing countries, millions of lei. Source: EUROSTAT (IDC);
- Domestic demand, millions of lei. Source: EUROSTAT (DD);
- RON/EUR exchange rate. Source: National Bank of Romania (REER).

The series are expressed in the average prices of 2005. The imports of agricultural products from developing countries I deflated by unit value indices of international trade, the exchange rate I deflated by CPI and the domestic demand I deflated by the corresponding price index. The existence of a significant seasonal component was determined for all variables. I seasonally adjusted the series using the TRAMO/SEATS method. For the three variables included in the study testing the integration order was made through two procedures: the Augmented Dickey-Fuller test and the Phillips-Perron test. The variables are integrated of order 1, which is consistent with a first difference stationary representation (Table 2).

Table 2: Tests of Stationarity

Series	Augmented Dickey-Fuller test		Phillips-Perron test	
	Level	First difference	Level	First difference
IDC	-	-5.3363*	-	-5.3754*
DD	2.4926	-3.0421**	2.5921	-3.0619**
REER	-2.588	-4.3935*	-	-4.3935*
	-		1.8623	
	1.1753		-1.308	

*null hypothesis of unit root existence is rejected at the 1% level;

** null hypothesis of unit root existence is rejected at the 5% level

The tests for choosing the number of lags indicate three lags as the optimal number. Using three lags, the VAR becomes unstable, which is why I chose to use two lags. The solution of the characteristic equation indicates a stable VAR. With a comfortable margin, the tested hypotheses (lack of autocorrelation, normality and homoscedasticity) are not rejected at the significant conventional

levels of 1 percent and 5 percent. The non-stationarity of series motivated the use of the Johansen multivariate procedure in the analysis, which, by both criteria used, λ_{trace} and λ_{max} , identified, at a statistically significant level of 5 percent, the presence of a long-term stationary relation (cointegration) among non-stationary series (Table 3).

Table 3: Johansen Cointegration Test

Trend assumption	Lags interval	Trace Test		
		Hypothesized No of CE(S)	Trace Statistics	Critical Value
Linear deterministic trend	2	R=0*	58.34213	29.79707
		R= at most 1	14.53145	15.49471
		R= at most 2*	5.085065	3.841466
	2	<i>Maximum Eigenvalue Test</i>		
		Hypothesized No of CE(S)	Trace Statistics	Critical Value
		R=0*	43.81068	21.13162
	R= at most 1	9.446383	14.26460	
	R= at most 2*	5.085065	3.841466	

*denotes rejection of the hypothesis at the 0.05 level

Orthogonalization of innovation or the identification of structural shocks, u_t , is made by imposing zero restrictions on the matrix coefficients describing the structural, contemporary relations of the variables of interest (matrix A), using the method Sims

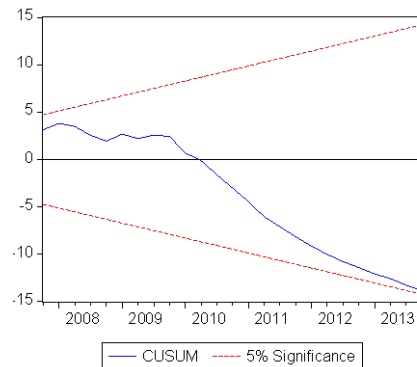
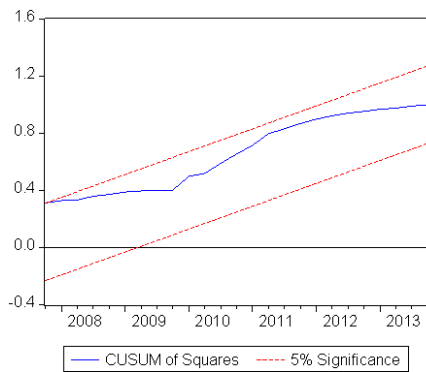
Bernanke (1986). The variable in a row is influenced during the quarter by the variables of the columns. "0" means no influence, and "1" indicates the existence of influence. Also, each variable is influenced by itself (Table 4).

Table 4: A Matrix structure

	IDC	DD	REER
IDC	1	1	1
DD	0	1	0
REER	0	1	1

The imposed restrictions indicate that, within a quarter time horizon, the imports of agricultural products from developing countries are affected by the domestic demand and the RON/EUR exchange rate. In turn, the domestic demand influences the RON/EUR exchange rate.

As it can be noted from Figure 5, for both CUSUM test and CUSUM of squares test, the tested indicator chart does not protrude outside the critical band corresponding to a significance level of 5 percent. Therefore, at this significant level, the hypothesis of stable coefficients cannot be rejected, the result giving one more validation to the investigated model.

**Fig 5: Coefficients Stability Test**

Assessments of the Results Provided by the Econometric Model

According to the estimated model, I simulated the impulse response function in the three series as presented in Figure 6.

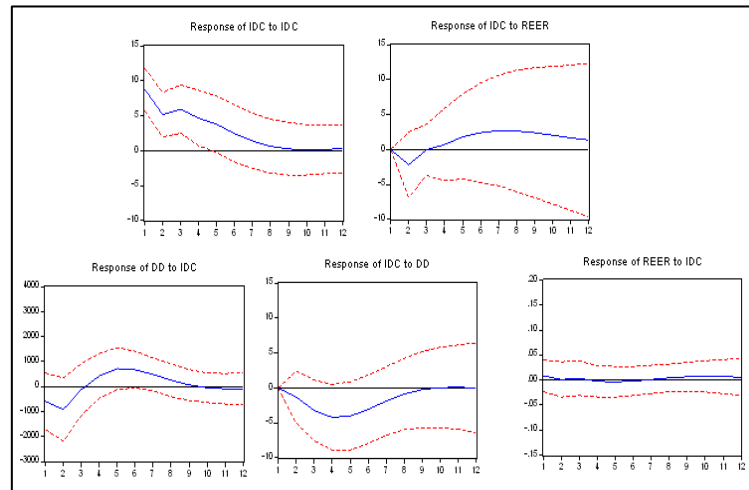


Fig 6: IDC Responses to Structural Innovations

(innovation = a standard deviation)

It is noted that imports of agricultural products from developing countries respond negatively to shocks to the domestic demand and to those coming from RON/EUR exchange rate in the first nine quarters, respectively in the first three quarters and then positively. In addition, the IDC responds positively to the own innovations.

Examining the variance decomposition (Table 5), it results that after four quarters, the variation of agricultural product imports from developing countries is 82.2 percent explained by own innovations. Longer periods of time, the shocks of the domestic demand and RON/EUR exchange rate are much higher, reaching to explain 20.7 percent and 15.1 percent of change IDC after 12 quarters.

Table 5: Variance Decomposition of IDC

% of IDC variance explained by innovations in:

Period	S.E.	IDC	DD	REER
1	8.793140	100.0000	0.000000	0.000000
2	10.50445	94.22881	1.531318	4.239872
3	12.49690	89.26942	7.734337	2.996239
4	14.00499	82.20444	15.15167	2.643893
5	15.16444	76.37027	19.90554	3.724186
6	15.84163	72.36721	21.92458	5.708213
7	16.24134	69.60018	22.18043	8.219392
8	16.49370	67.64051	21.78797	10.57152
9	16.67239	66.22414	21.34294	12.43292
10	16.79809	65.24491	21.02611	13.72898
11	16.88300	64.60398	20.81914	14.57687
12	16.94011	64.19998	20.67911	15.12091

In Table 6 are presented the results of the Granger causality test.

Table 6: The Granger Causality Test

Pairwise Granger Causality Tests			
Sample: 2007Q01 2013Q4			
Lags: 2			
Null Hypothesis:	Obs	F-Statistic	Probability
DD does not Granger Cause IDC	26	5.97032	0.00885
IDC does not Granger Cause DD		9.02643	0.00148
REER does not Granger Cause IDC	26	2.81627	0.08250
IDC does not Granger Cause REER		1.57235	0.23103
REER does not Granger Cause DD	26	0.27251	0.76412
DD does not Granger Cause REER		2.08325	0.14951

As it can be noticed, the variable domestic demand causes the imports of agricultural products from developing countries in the Granger sense (p-value of the test: 0.00885), therefore the influence of DD has a regular, predictable character. The null hypothesis, according to which the RON/EUR exchange rate does not Granger causes the imports of agricultural products from developing countries, is rejected at 10 percent. In this respect, taking into account the possibility of type I errors, it can say, in the context of the same analysis, that REER is causing IDC, i.e. the value of agricultural imports from developing countries are explained by the past values of the exchange rate and the value of the exchange rate are explained by the future values of the agricultural imports.

Conclusions

The characteristic element of Romanian foreign trade in agricultural products with developing countries is the tendency of continuous growth since 2008 in its proportion in the GDP, also reflecting the economy opening to the outside. The trend of the national economy opening is the result of many factors, among which we mention: the policies for the liberalization of foreign trade, by pronounced as possible opening of the economy to global markets, by the re-division of markets amid the globalization and regionalization processes.

Throughout the period 2007-2013, Romania registered trade surplus with developing countries in the following product categories: live animals; oil seeds and oleaginous fruits; miscellaneous grains; seeds and fruit; industrial or medicinal plants; straw and fodder and dairy produce; eggs; honey; edible

animal products. Export effort gradually increased from 3.581 percent in 2010 to 8.788 percent in 2013. The import penetration rate on the domestic market has fluctuated in the period under review, ranging from 1.664 percent to 2.029 percent.

In the next period, in order to adapt to changes and to increase the competitiveness of the agricultural sector it is necessary to implement a set of fiscal, trade and industrial policies, to allow for the differentiated provision and on limited periods of some facilities to those agents with a relatively high growth potential of the gross value added and of the propagation of technological and innovation progress.

Acknowledgement:

This work was cofinanced from the European Social Fund through Sectoral Operational Programme Human Resources Development 2007-2013, project number POSDRU/159/1.5/S/142115 „Performance and excellence in doctoral and postdoctoral research in Romanian economics science domain”.

References

- 1.Albu, L.L, Pelinescu, E. & Scutaru, C. (2003). 'Modele Si Prognoze Pe Termen Scurt,' Aplicatii pentru Romania, *Expert Publishing House*, Bucharest.
- 2.Bernanke, B. S. (1986). "Alternative Explanations of Money-Income Correlation," *Carnegie Rochester Conference Series on Public Policy* 25.
- 3.Binder, M. & Ward, F. (2013). "The Structure of Subjective Well-being: A Vector

- Autoregressive Approach," *Macroeconomica*, 64 (2), 361-400.
4. Botel, C. (2002). 'Cauzele Inflatiei in Romania,' iunie 1997-august 2001. Analiza bazata pe Vectorul Autoregresiv Structural, Occasional Papers No. 11, National Bank of Romania.
5. Capanu, I., Wagner, P. & Mitrut, C. (1994). 'System of National Accounts and Macroeconomic Aggregates,' *All Publishing House*, Bucharest.
6. Chudik, A. & Pesaran, M. H. (2011). "Infinite-dimensional VARs and Factor Models," *Journal of Econometrics*, 163 (1), 4-22.
7. Enders, W. (1995). 'Applied Econometric Time Series,' *John Wiley & Sons, Inc.*
8. Engle, R. F. & Granger, W. J. (1987). "Co-Integration and Error Correction: Representation, Estimation and Testing," *Econometrica*, 55(2), 251-276.
9. Erceg, C. J. & Linde, J. (2010). "Asymmetric Shocks in a Currency Union with Monetary and Fiscal Handcuffs," International Finance Discussion Paper No. 1012, Board of Governors of the Federal Reserve System, Washington, D.C., December.
10. Favero, C.A. (2001). 'Applied Macroeconometrics,' *Oxford University Press*, Oxford.
11. Fleming, J. & Kirby, C. (2011). "Long Memory in Volatility and Trading Volume," *Journal of Banking and Finance*, 35, 1714-1726.
12. Granger, C. W. J. (1969). "Investigating Causal Relations by Econometric Models and Cross-spectral Methods," *Econometrica* 37 (3), 424-438.
13. Hamilton, J.D. (1994). 'Times Series Analysis,' *Princeton University Press*, p.259.
14. Johansen, S. (1991). "Estimating and Testing Cointegration Vectors in Gaussian Vector Autoregressive Models," *Econometrica*, 59, 1551-1580.
15. Johansen, S. & Nielsen, M. O. (2012). "Likelihood Inference for a Fractionally Cointegrated Vector Autoregressive Model," *Econometrica*, 80(6), 2667-2732.
16. Pauna, B. (2007). "Modelarea Si Evaluarea Impactului Investitiilor Directe, Nationale Si Internationale Asupra Pietei Muncii Si Evolutiei Macroeconomice din Romania," Metode VAR si VEC, *Working Papers of Macroeconomic Modelling Seminar 071504*, Institute for Economic Forecasting.
17. Sims, C. (1986). "Are Forecasting Models Usable for Policy Analysis?," *Quarterly Review*, Federal Reserve bank of Minneapolis, Winter.
18. Smith, L. V. & Galesi, A. (2011). 'GVAR Toolbox 1.1 User Guide,' *CFAP & CIMF*, University of Cambridge, Cambridge.
19. Zai, P.V. (2015). 'New Approaches Regarding Structural Funds Absorption - Romania vs. Central and Eastern European New Member States,' *Journal of Eastern Europe Research in Business and Economics*, IBIMA Publishing (accepted for publishing).